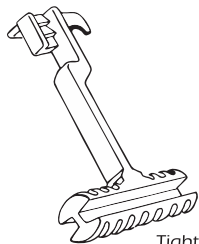
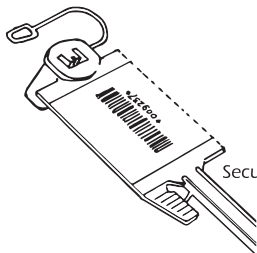


SECURNECK Seals

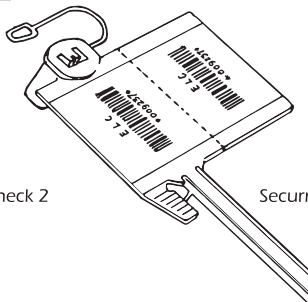
how to use



Tightening Tool (optional)



Securneck 2



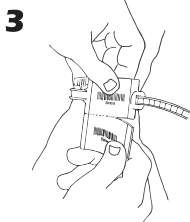
Securneck 1

TO CLOSE



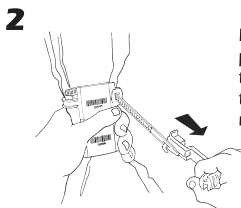
1

Wrap the seal around the bag and insert seals tail into opening of the capsule.



3

If the Securneck has a tear-off receipt, tear it and keep it for future tamper evidence checking.



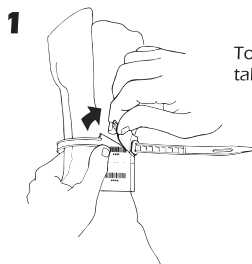
2

Pull firmly exerting enough pressure for the desired tightness, using optional tightening tool, or by manually pulling.



In case you use a label, pass holder string through label eyelet.

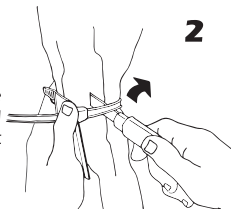
TO OPEN



1

To remove the seal, simply pull the tab next to the capsule.

If the Securneck does not have the "easy removal" feature, cut the seal from inside-out so you do not damage the bag.



2



CAREFUL!

Keep the seal until checking is finished. If irregularities occur, the loss of the seal, makes the employees responsible.

In case of any irregularity, call your security personnel. If the seal should go to further inspection, the sealed object must also follow it.

If everything is in order, destroy the used seals.

ELC is not responsible for the incorrect use of this product.



SECURNECKENG - 09/17



ELC Security Products

www.elcsecurity.com

8252 NW 30th Terrace • Miami, FL 33122 • USA
 Phone: (305) 477-2303 • Fax: (305) 477-0186 • Toll Free: 800 377-3257 • E-mail: seals@elcsecurity.com
 CNPJ: 73.323.404/0001-90 Inc. Est.: 84.604.259