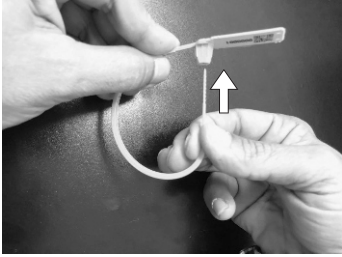


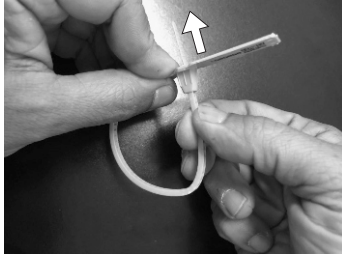
Pullock Seals

HOW TO USE

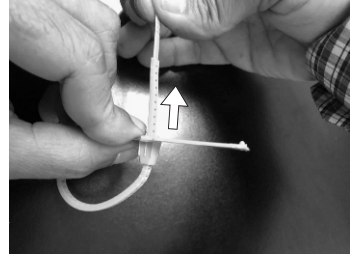
CORRECT INSERTION



1 - To close the seal, hold the end tip of the thread and push it through the locking mechanism.

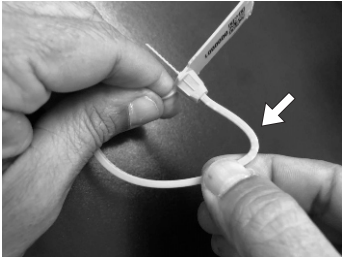


2 - Push it until you hear the first "click".

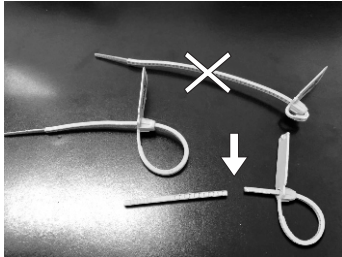


3 - Slowly pull the end tip of the seal to the desired aperture.

INCORRECT INSERTION

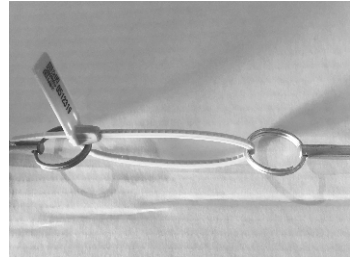


4 - Make sure you hold the seal on its very end while inserting. Holding the seal on the middle of the thread may cause weaknesses to it.



5 - When cinching the seal up, do not tighten it too much, as it may stress the seal and cause it to break.

Attention for seals with cut thread as they may indicate tampering signs.



6 - The pullock seals are meant to indicate tampering and not to hold the compartment closed. When the seal is used on its last locking point under stress, as per picture below, the seal may accidentally break.



USA
☎ (305) 477-2303
e-mail: seals@elcsecurity.com

ITALY
☎ (06) 308-93876
e-mail: starlock.srl@tin.it

BRAZIL
☎ +55 24 2263-9500 Ext. 2
e-mail: elc@elc.com.br

www.elcsecurity.com

